

CHEK2 Polyclonal Antibody

Catalog No. E-AB-30918

Note: Centrifuge before opening to ensure complete recovery of vial contents.

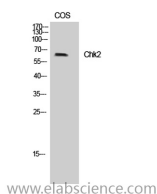
Description

Reactivity	Human, Mouse, Rat, Monkey
Immunogen	Synthesized peptide derived from human Chk2 around the non-phosphorylation site of T383.
Host	Rabbit
Isotype	IgG
Purification	Affinity purification
Buffer	PBS with 0.02% sodium azide, 0.5% BSA and 50% glycerol pH 7.4.

Applications Recommended Dilution

WB 1:500-1:2000,
IHC 1:100-1:300,
ELISA 1:5000

Data



Western Blot analysis of COS-7 cells with CHEK2
Polyclonal Antibody
Observed Mw:60kDa
Calculated Mw:61kDa

Preparation & Storage

Storage Store at -20°C. Avoid freeze / thaw cycles.

Background

Regulates cell cycle checkpoints and apoptosis in response to DNA damage, particularly to DNA double-strand breaks. Inhibits CDC25C phosphatase by phosphorylation on 'Ser-216', preventing the entry into mitosis. May also play a role in meiosis. Regulates the TP53 tumor suppressor through phosphorylation at 'Thr-18' and 'Ser-20'.

For Research Use Only