

## CHEK2 Polyclonal Antibody

Catalog No. E-AB-30919

**Note:** Centrifuge before opening to ensure complete recovery of vial contents.

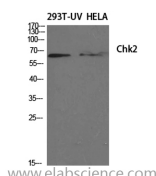
### Description

<b>Reactivity</b>	Human,Mouse,Rat
<b>Immunogen</b>	Synthesized peptide derived from human Chk2 around the non-phosphorylation site of T68.
<b>Host</b>	Rabbit
<b>Isotype</b>	IgG
<b>Purification</b>	Affinity purification
<b>Buffer</b>	PBS with 0.02% sodium azide,0.5% protective protein and 50% glycerol pH 7.4.

### Applications Recommended Dilution

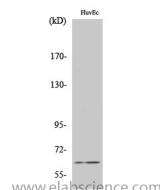
<b>WB</b>	1:500-1:2000
<b>IHC</b>	1:100-1:300
<b>ELISA</b>	1:10000

### Data



Western Blot analysis of 293T-UV, Hela cells using CHEK2 Polyclonal Antibody at dilution of 1:500.

**Observed Mw:61kDa**  
**Calculated Mw:61kDa**



Western Blot analysis of HuvEc cells using CHEK2 Polyclonal Antibody at dilution of 1:500.

### Preparation & Storage

**Storage** Store at -20°C. Avoid freeze / thaw cycles.

### Background

Regulates cell cycle checkpoints and apoptosis in response to DNA damage, particularly to DNA double-strand breaks. Inhibits CDC25C phosphatase by phosphorylation on 'Ser-216', preventing the entry into mitosis. May also play a role in meiosis. Regulates the TP53 tumor suppressor through phosphorylation at 'Thr-18' and 'Ser-20'.

### For Research Use Only