

CHKB Polyclonal Antibody

Catalog No. E-AB-30921

Note: Centrifuge before opening to ensure complete recovery of vial contents.

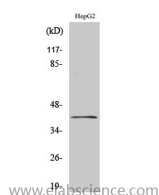
Description

Reactivity	Human
Immunogen	Synthesized peptide derived from the C-terminal region of human ChoKB
Host	Rabbit
Isotype	IgG
Purification	Affinity purification
Buffer	PBS with 0.02% sodium azide, 0.5% protective protein and 50% glycerol pH 7.4.

Applications Recommended Dilution

WB	1:500-1:2000
IHC	1:100-1:300
ELISA	1:20000

Data



Western Blot analysis of HepG2 cells with CHKB
Polyclonal Antibody
Observed Mw:45kDa
Calculated Mw:45kDa

Preparation & Storage

Storage Store at -20°C. Avoid freeze / thaw cycles.

Background

Choline kinase (CK) and ethanolamine kinase (EK) catalyze the phosphorylation of choline/ethanolamine to phosphocholine/phosphoethanolamine. This is the first enzyme in the biosynthesis of phosphatidylcholine/phosphatidylethanolamine in all animal cells. The highly purified CKs from mammalian sources and their recombinant gene products have been shown to have EK activity also, indicating that both activities reside on the same protein. The choline kinase-like protein encoded by CHKL belongs to the choline/ethanolamine kinase family; however, its exact function is not known. Read-through transcripts are expressed from this locus that include exons from the downstream CPT1B locus. CHKB (Choline Kinase Beta) is a Protein Coding gene. Diseases associated with CHKB include Muscular Dystrophy, Congenital, Megaconial Type and Chkb-Related Muscle Diseases. Among its related pathways are Synthesis of PC and Glycerophospholipid biosynthesis. GO annotations related to this gene include transferase activity, transferring phosphorus-containing groups and choline kinase activity. An important paralog of this

For Research Use Only

gene is CHKA.