

CHOP Polyclonal Antibody

Catalog No. E-AB-30922

Note: Centrifuge before opening to ensure complete recovery of vial contents.

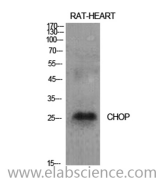
Description

Reactivity	Human, Mouse, Rat
Immunogen	Synthesized peptide derived from the Internal region of human CHOP
Host	Rabbit
Isotype	IgG
Purification	Affinity purification
Buffer	PBS with 0.02% sodium azide, 0.5% BSA and 50% glycerol, pH7.4

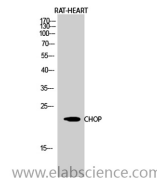
Applications Recommended Dilution

WB 1:500-1:2000,
IHC 1:100-1:300, IF
1:200-1:1000, ELISA
1:5000

Data



Western Blot analysis of Rat heart cells using CHOP Polyclonal Antibody at dilution of 1:1000.
Observed Mw:26kDa
Calculated Mw:19kDa



Western Blot analysis of Rat heart using CHOP Polyclonal Antibody at dilution of 1:1000.

Preparation & Storage

Storage Store at -20°C. Avoid freeze / thaw cycles.

Background

This gene encodes a member of the CCAAT/enhancer-binding protein (C/EBP) family of transcription factors. The protein functions as a dominant-negative inhibitor by forming heterodimers with other C/EBP members, such as C/EBP and LAP (liver activator protein), and preventing their DNA binding activity. The protein is implicated in adipogenesis and erythropoiesis, is activated by endoplasmic reticulum stress, and promotes apoptosis. Fusion of this gene and FUS on chromosome 16 or EWSR1 on chromosome 22 induced by translocation generates chimeric proteins in myxoid liposarcomas or Ewing sarcoma. Multiple alternatively spliced transcript variants encoding two isoforms with different length have been identified.

For Research Use Only