

CHP1 Polyclonal Antibody

Catalog No. E-AB-30925

Note: Centrifuge before opening to ensure complete recovery of vial contents.

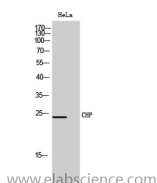
Description

Reactivity	Human,Mouse,Rat
Immunogen	Synthesized peptide derived from the Internal region of human CHP.
Host	Rabbit
Isotype	IgG
Purification	Affinity purification
Buffer	PBS with 0.02% sodium azide,0.5% protective protein and 50% glycerol pH 7.4.

Applications Recommended Dilution

WB	1:500-1:2000
ELISA	1:20000

Data



Western Blot analysis of HeLa cells with CHP1
Polyclonal Antibody
Observed Mw:24kDa
Calculated Mw:22kDa

Preparation & Storage

Storage Store at -20°C. Avoid freeze / thaw cycles.

Background

This gene encodes a phosphoprotein that binds to the Na⁺/H⁺ exchanger NHE1. This protein serves as an essential cofactor which supports the physiological activity of NHE family members and may play a role in the mitogenic regulation of NHE1. The protein shares similarity with calcineurin B and calmodulin and it is also known to be an endogenous inhibitor of calcineurin activity. CHP1 (Calcineurin Like EF-Hand Protein 1) is a Protein Coding gene. Among its related pathways are Role of Calcineurin-dependent NFAT signaling in lymphocytes and Calcineurin-regulated NFAT-dependent transcription in lymphocytes. GO annotations related to this gene include calcium ion binding and microtubule binding. An important paralog of this gene is CHP2.

For Research Use Only