

CHP2 Polyclonal Antibody

Catalog No. E-AB-30926

Note: Centrifuge before opening to ensure complete recovery of vial contents.

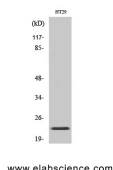
Description

Reactivity	Human,Mouse,Rat
Immunogen	Synthesized peptide derived from the Internal region of human CHP2
Host	Rabbit
Isotype	IgG
Purification	Affinity purification
Conjugation	Unconjugated
Buffer	PBS with 0.02% sodium azide, 0.5% protective protein and 50% glycerol, pH7.4

Applications Recommended Dilution

WB	1:500-1:2000
ELISA	1:40000

Data



Western Blot analysis of HT29 cells with CHP2
Polyclonal Antibody.
Observed Mw:22kDa
Calculated Mw:22kDa

Preparation & Storage

Storage Store at -20°C. Avoid freeze / thaw cycles.

Background

This gene product is a small calcium-binding protein that regulates cell pH by controlling plasma membrane-type Na⁺/H⁺ exchange activity. This protein shares sequence similarity with calcineurin B and can bind to and stimulate the protein phosphatase activity of calcineurin A (CnA) and functions in the calcineurin/NFAT (nuclear factor of activated T cells) signaling pathway. Another member of the CHP subfamily, Calcineurin B homologous protein 1, is located on Chromosome 15 and is an inhibitor of calcineurin activity and has a genetic phenotype associated with Parkinson's Disease (OMIM:606988). This gene was initially identified as a tumor-associated antigen and was previously referred to as Hepatocellular carcinoma-associated antigen 520. CHP2 (Calcineurin Like EF-Hand Protein 2) is a Protein Coding gene. Diseases associated with CHP2 include Hepatocellular Carcinoma. Among its related pathways are Respiratory electron transport, ATP synthesis by chemiosmotic coupling, and heat production by uncoupling proteins.. GO annotations related to this gene include calcium ion binding. An important paralog of this gene is CHP1.

For Research Use Only

For Research Use Only

Toll-free: 1-888-852-8623

Web: www.elabscience.com

Tel: 1-832-243-6086

Email: techsupport@elabscience.com

Fax: 1-832-243-6017