

CHST13 Polyclonal Antibody

Catalog No. E-AB-30928

Note: Centrifuge before opening to ensure complete recovery of vial contents.

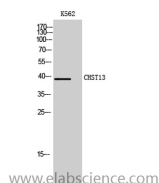
Description

Reactivity	Human
Immunogen	Synthesized peptide derived from the Internal region of human CHST13
Host	Rabbit
Isotype	IgG
Purification	Affinity purification
Buffer	PBS with 0.02% sodium azide, 0.5% protective protein and 50% glycerol pH 7.4.

Applications Recommended Dilution

WB	1:500-1:2000
IHC	1:100-1:300
ELISA	1:40000

Data



Western Blot analysis of K562 cells with CHST13
Polyclonal Antibody.
Observed Mw:39kDa
Calculated Mw:39kDa

Preparation & Storage

Storage Store at -20°C. Avoid freeze / thaw cycles.

Background

The protein encoded by this gene belongs to the sulfotransferase 2 family. It is localized to the golgi membrane, and catalyzes the transfer of sulfate to the C4 hydroxyl of beta-1,4-linked N-acetylgalactosamine (GalNAc) flanked by glucuronic acid residue in chondroitin. Chondroitin sulfate constitutes the predominant proteoglycan present in cartilage and is distributed on the surfaces of many cells and extracellular matrices. CHST13 (Carbohydrate Sulfotransferase 13) is a Protein Coding gene. Among its related pathways are Chondroitin sulfate/dermatan sulfate metabolism and Glycosaminoglycan metabolism. GO annotations related to this gene include sulfotransferase activity and chondroitin 4-sulfotransferase activity. An important paralog of this gene is CHST11.

For Research Use Only