

CHSY1 Polyclonal Antibody

Catalog No. E-AB-30930

Note: Centrifuge before opening to ensure complete recovery of vial contents.

Description

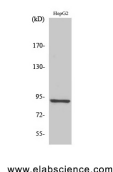
Reactivity	Human,Mouse
Immunogen	Synthesized peptide derived from the Internal region of human CHSY1
Host	Rabbit
Isotype	IgG
Purification	Affinity purification
Conjugation	Unconjugated
Buffer	PBS with 0.02% sodium azide, 0.5% protective protein and 50% glycerol, pH7.4

Applications

Recommended Dilution

WB	1:500-1:2000
IHC	1:100-1:300
ELISA	1:10000

Data



Western Blot analysis of HepG2 cells with CHSY1
Polyclonal Antibody.
Observed Mw:91kDa
Calculated Mw:92kDa

Preparation & Storage

Storage Store at -20°C. Avoid freeze / thaw cycles.

Background

This gene encodes a member of the chondroitin N-acetylgalactosaminyltransferase family. These enzymes possess dual glucuronyltransferase and galactosaminyltransferase activity and play critical roles in the biosynthesis of chondroitin sulfate, a glycosaminoglycan involved in many biological processes including cell proliferation and morphogenesis. Decreased expression of this gene may play a role in colorectal cancer, and mutations in this gene are a cause of temtamy preaxial brachydactyly syndrome. CHSY1 (Chondroitin Sulfate Synthase 1) is a Protein Coding gene. Diseases associated with CHSY1 include Temtamy Preaxial Brachydactyly Syndrome and Brachydactyly. Among its related pathways are Chondroitin sulfate/dermatan sulfate metabolism and Glycosaminoglycan metabolism. GO annotations related to this gene include transferase activity, transferring glycosyl groups and glucuronosyl-N-acetylgalactosaminyl-proteoglycan 4-beta-N-

For Research Use Only

acetylgalactosaminyltransferase activity. An important paralog of this gene is CHSY3.