

CIB3 Polyclonal Antibody

Catalog No. E-AB-30931

Note: Centrifuge before opening to ensure complete recovery of vial contents.

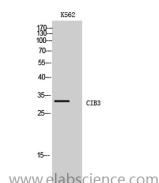
Description

Reactivity	Human,Mouse
Immunogen	Synthesized peptide derived from the C-terminal region of human CIB3
Host	Rabbit
Isotype	IgG
Purification	Affinity purification
Buffer	PBS with 0.02% sodium azide,0.5% protective protein and 50% glycerol pH 7.4.

Applications Recommended Dilution

WB	1:500-1:2000
ELISA	1:20000

Data



Western Blot analysis of K562 cells with CIB3
Polyclonal Antibody.
Observed Mw:32kDa
Calculated Mw:22kDa

Preparation & Storage

Storage Store at -20°C. Avoid freeze / thaw cycles.

Background

This gene product shares a high degree of sequence similarity with DNA-dependent protein kinase catalytic subunit-interacting protein 2 in human and mouse, and like them may bind the catalytic subunit of DNA-dependent protein kinases. The exact function of this gene is not known. Alternative splicing results in multiple transcript variants. CIB3 (Calcium And Integrin Binding Family Member 3) is a Protein Coding gene. GO annotations related to this gene include calcium ion binding. An important paralog of this gene is CIB2.

For Research Use Only