

## CIDEB Polyclonal Antibody

Catalog No. E-AB-30932

**Note:** Centrifuge before opening to ensure complete recovery of vial contents.

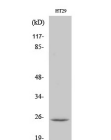
### Description

<b>Reactivity</b>	Human,Mouse
<b>Immunogen</b>	Synthesized peptide derived from the Internal region of human CIDE-B
<b>Host</b>	Rabbit
<b>Isotype</b>	IgG
<b>Purification</b>	Affinity purification
<b>Conjugation</b>	Unconjugated
<b>Buffer</b>	PBS with 0.02% sodium azide, 0.5% protective protein and 50% glycerol, pH7.4

### Applications Recommended Dilution

<b>WB</b>	1:500-1:2000
<b>IHC</b>	1:100-1:300
<b>IF</b>	1:200-1:1000
<b>ELISA</b>	1:40000

### Data



www.elabscience.com

Western Blot analysis of HT29 cells with CIDEB  
Polyclonal Antibody  
**Observed Mw:24kDa**  
**Calculated Mw:25kDa**

### Preparation & Storage

**Storage** Store at -20°C. Avoid freeze / thaw cycles.

### Background

This protein can activate apoptosis. It is inhibited by DFFB and interacts with DFFA and DFFB. It has high levels of expression in liver and small intestine, and has lower levels of expression in colon, kidney and spleen. CideB specifically interacts with VLDL structural protein, apolipoprotein B100 (apoB100), but not with albumin, a PTG cargo protein. It can interact with COPII components, Sar1 and Sec24.

### For Research Use Only