

Claudin 3 Polyclonal Antibody

Catalog No. E-AB-30942

Note: Centrifuge before opening to ensure complete recovery of vial contents.

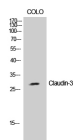
Description

Reactivity	Human
Immunogen	Synthesized peptide derived from human Claudin-3 around the non-phosphorylation site of Tyr219.
Host	Rabbit
Isotype	IgG
Purification	Affinity purification
Conjugation	Unconjugated
Buffer	PBS with 0.02% sodium azide, 0.5% protective protein and 50% glycerol, pH7.4

Applications Recommended Dilution

WB	1:500-1:2000
IHC	1:100-1:300
ELISA	1:5000

Data



www.elabscience.com

Western Blot analysis of COLO205 cells using Claudin 3 Polyclonal Antibody at dilution of 1:2000.

Observed Mw:28kDa
Calculated Mw:23kDa

Preparation & Storage

Storage Store at -20°C. Avoid freeze / thaw cycles.

Background

Plays a major role in tight junction-specific obliteration of the intercellular space, through calcium-independent cell-adhesion activity.

For Research Use Only