

Claudin 4 Polyclonal Antibody

Catalog No. E-AB-30944

Note: Centrifuge before opening to ensure complete recovery of vial contents.

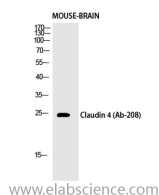
Description

Reactivity	Human
Immunogen	Synthesized peptide derived from human Claudin-4 around the non-phosphorylation site of Y208.
Host	Rabbit
Isotype	IgG
Purification	Affinity purification
Buffer	PBS with 0.02% sodium azide, 0.5% protective protein and 50% glycerol pH 7.4.

Applications Recommended Dilution

WB	1:500-1:2000
IHC	1:100-1:300
ELISA	1:5000

Data



Western Blot analysis of Mouse brain using Claudin 4 Polyclonal Antibody at dilution of 1:500.

Observed Mw:28kDa
Calculated Mw:22kDa

Preparation & Storage

Storage Store at -20°C. Avoid freeze / thaw cycles.

Background

Claudin 4, also known as CLDN4, is a protein which in humans is encoded by the CLDN4 gene. It belongs to the group of claudins. This gene encodes an integral membrane protein, which belongs to the claudin family. The protein is a component of tight junction strands and may play a role in internal organ development and function during pre- and postnatal life. This gene is deleted in Williams-Beuren syndrome, a neurodevelopmental disorder affecting multiple systems.

For Research Use Only