

CLCN6 Polyclonal Antibody

Catalog No. E-AB-30949

Note: Centrifuge before opening to ensure complete recovery of vial contents.

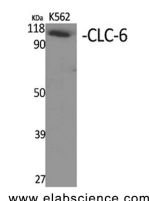
Description

Reactivity	Human,Mouse,Rat,Monkey
Immunogen	Synthesized peptide derived from the Internal region of human CLC-6
Host	Rabbit
Isotype	IgG
Purification	Affinity purification
Conjugation	Unconjugated
Buffer	PBS with 0.02% sodium azide, 0.5% protective protein and 50% glycerol, pH7.4

Applications Recommended Dilution

WB	1:500-1:2000
ELISA	1:40000

Data



Western Blot analysis of K562 cells using CLCN6 Polyclonal Antibody at dilution of 1:500.

Observed Mw:97kDa
Calculated Mw:97kDa

Preparation & Storage

Storage Store at -20°C. Avoid freeze / thaw cycles.

Background

This gene encodes a member of the voltage-dependent chloride channel protein family. Members of this family can function as either chloride channels or antiporters. This protein is primarily localized to late endosomes and functions as a chloride/proton antiporter. Alternate splicing results in both coding and non-coding variants. Additional alternately spliced variants have been described but their full-length structure is unknown. CLCN6 (Chloride Voltage-Gated Channel 6) is a Protein Coding gene. Diseases associated with CLCN6 include Benign Familial Infantile Epilepsy. Among its related pathways are Transport of glucose and other sugars, bile salts and organic acids, metal ions and amine compounds and HIV Life Cycle. GO annotations related to this gene include ion channel activity and voltage-gated chloride channel activity. An important paralog of this gene is CLCN7.

For Research Use Only