

CLIP3 Polyclonal Antibody

Catalog No. E-AB-30956

Note: Centrifuge before opening to ensure complete recovery of vial contents.

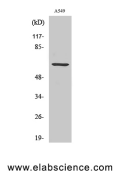
Description

Reactivity	Human,Mouse,Rat
Immunogen	Synthesized peptide derived from the Internal region of human CLIP3
Host	Rabbit
Isotype	IgG
Purification	Affinity purification
Conjugation	Unconjugated
Buffer	PBS with 0.02% sodium azide, 0.5% protective protein and 50% glycerol, pH7.4

Applications Recommended Dilution

WB	1:500-1:2000
IHC	1:100-1:300
IF	1:200-1:1000
ELISA	1:40000

Data



www.elabscience.com

Western Blot analysis of A549 cells with CLIP3
Polyclonal Antibody.
Observed Mw:60kDa
Calculated Mw:60kDa

Preparation & Storage

Storage Store at -20°C. Avoid freeze / thaw cycles.

Background

This gene encodes a member of the cytoplasmic linker protein 170 family. Members of this protein family contain a cytoskeleton-associated protein glycine-rich domain and mediate the interaction of microtubules with cellular organelles. The encoded protein plays a role in T cell apoptosis by facilitating the association of tubulin and the lipid raft ganglioside GD3. The encoded protein also functions as a scaffold protein mediating membrane localization of phosphorylated protein kinase B. Alternatively spliced transcript variants have been observed for this gene. CLIP3 (CAP-Gly Domain Containing Linker Protein 3) is a Protein Coding gene. Among its related pathways are Signaling by GPCR and TNF signaling (REACTOME). GO annotations related to this gene include microtubule binding and ganglioside binding. An

For Research Use Only

important paralog of this gene is CLIP4.