

CLK1 Polyclonal Antibody

Catalog No. E-AB-30958

Note: Centrifuge before opening to ensure complete recovery of vial contents.

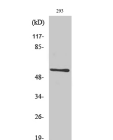
Description

Reactivity	Human,Mouse
Immunogen	Synthesized peptide derived from the Internal region of human CLK1
Host	Rabbit
Isotype	IgG
Purification	Affinity purification
Conjugation	Unconjugated
Buffer	PBS with 0.02% sodium azide, 0.5% protective protein and 50% glycerol, pH7.4

Applications Recommended Dilution

WB	1:500-1:2000
IHC	1:100-1:300
IF	1:200-1:1000
ELISA	1:20000

Data



www.elabscience.com

Western Blot analysis of 293 cells using CLK1
Polyclonal Antibody at dilution of 1:500.

Observed Mw:57kDa
Calculated Mw:57kDa

Preparation & Storage

Storage Store at -20°C. Avoid freeze / thaw cycles.

Background

This gene encodes a member of the CDC2-like (or LAMMER) family of dual specificity protein kinases. In the nucleus, the encoded protein phosphorylates serine/arginine-rich proteins involved in pre-mRNA processing, releasing them into the nucleoplasm. The choice of splice sites during pre-mRNA processing may be regulated by the concentration of transacting factors, including serine/arginine rich proteins. Therefore, the encoded protein may play an indirect role in governing splice site selection. Multiple transcript variants encoding different isoforms have been found for this gene. CLK1 (CDC Like Kinase 1) is a Protein Coding gene. Among its related pathways are mRNA Splicing - Major Pathway and Legionellosis. GO annotations related to this gene include transferase activity, transferring phosphorus-

For Research Use Only

containing groups and protein tyrosine kinase activity. An important paralog of this gene is CLK4.