

CLP36 Polyclonal Antibody

Catalog No. E-AB-30963

Note: Centrifuge before opening to ensure complete recovery of vial contents.

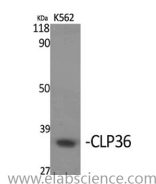
Description

| | |
|---------------------|--|
| Reactivity | Human,Mouse,Rat |
| Immunogen | Synthesized peptide derived from the Internal region of human CLP36 |
| Host | Rabbit |
| Isotype | IgG |
| Purification | Affinity purification |
| Buffer | PBS with 0.02% sodium azide,0.5% protective protein and 50% glycerol pH 7.4. |

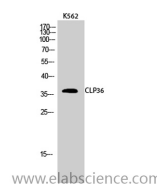
Applications Recommended Dilution

| | |
|--------------|--------------|
| WB | 1:500-1:2000 |
| IHC | 1:100-1:300 |
| IF | 1:200-1:1000 |
| ELISA | 1:5000 |

Data



Western Blot analysis of K562 cells using CLP36 Polyclonal Antibody at dilution of 1:1000.
Observed Mw:36kDa
Calculated Mw:36kDa



Western Blot analysis of K562 cells using CLP36 Polyclonal Antibody at dilution of 1:1000.

Preparation & Storage

Storage Store at -20°C. Avoid freeze / thaw cycles.

Background

This gene encodes a member of the enigma protein family. The protein contains two protein interacting domains, a PDZ domain at the amino terminal end and one to three LIM domains at the carboxyl terminal. It is a cytoplasmic protein associated with the cytoskeleton. The protein may function as an adapter to bring other LIM-interacting proteins to the cytoskeleton. Pseudogenes associated with this gene are located on chromosomes 3, 14 and 17.

For Research Use Only