

CMTM3 Polyclonal Antibody

Catalog No. E-AB-30968

Note: Centrifuge before opening to ensure complete recovery of vial contents.

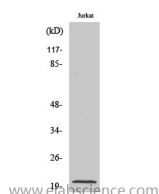
Description

Reactivity	Human,Monkey
Immunogen	Synthesized peptide derived from the N-terminal region of human CMTM3
Host	Rabbit
Isotype	IgG
Purification	Affinity purification
Buffer	PBS with 0.02% sodium azide,0.5% protective protein and 50% glycerol pH 7.4.

Applications Recommended Dilution

WB	1:500-1:2000
ELISA	1:40000

Data



Western Blot analysis of Jurkat cells using CMTM3
Polyclonal Antibody at dilution of 1:1000.

Observed Mw:22kDa
Calculated Mw:20kDa

Preparation & Storage

Storage Store at -20°C. Avoid freeze / thaw cycles.

Background

This gene belongs to the chemokine-like factor gene superfamily, a novel family that is similar to the chemokine and the transmembrane 4 superfamilies of signaling molecules. This gene is one of several chemokine-like factor genes located in a cluster on chromosome 16. Alternatively spliced transcript variants containing different 5' UTRs, but encoding the same protein, have been identified. [

For Research Use Only