

## CNGA2 Polyclonal Antibody

**Catalog No.** E-AB-30978

**Note:** Centrifuge before opening to ensure complete recovery of vial contents.

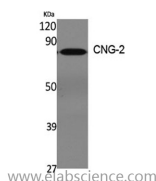
### Description

<b>Reactivity</b>	Human, Mouse, Rat
<b>Immunogen</b>	Synthesized peptide derived from the Internal region of human CNG-2
<b>Host</b>	Rabbit
<b>Isotype</b>	IgG
<b>Purification</b>	Affinity purification
<b>Buffer</b>	PBS with 0.02% sodium azide, 0.5% protective protein and 50% glycerol pH 7.4.

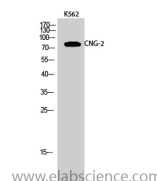
### Applications Recommended Dilution

<b>WB</b>	1:500-1:2000
<b>IF</b>	1:200-1:1000
<b>ELISA</b>	1:40000

### Data



Western Blot analysis of 293T cells with CNGA2 Polyclonal Antibody  
**Observed Mw:83kDa**  
**Calculated Mw:76kDa**



Western Blot analysis of K562 cells with CNGA2 Polyclonal Antibody

### Preparation & Storage

**Storage** Store at -20°C. Avoid freeze / thaw cycles.

### Background

The protein encoded by this gene represents the alpha subunit of a cyclic nucleotide-gated olfactory channel. The encoded protein contains a carboxy-terminal leucine zipper that mediates channel formation. Odorant signal transduction is probably mediated by a G-protein coupled cascade using cAMP as second messenger. The olfactory channel can be shown to be activated by cyclic nucleotides which leads to a depolarization of olfactory sensory neurons.

### For Research Use Only