

CNP Polyclonal Antibody

Catalog No. E-AB-30982

Note: Centrifuge before opening to ensure complete recovery of vial contents.

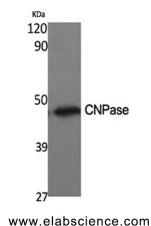
Description

Reactivity	Human,Mouse,Rat
Immunogen	Synthesized peptide derived from the Internal region of human CNPase.
Host	Rabbit
Isotype	IgG
Purification	Affinity purification
Conjugation	Unconjugated
Buffer	PBS with 0.02% sodium azide, 0.5% protective protein and 50% glycerol, pH7.4

Applications Recommended Dilution

WB	1:500-1:2000
IHC	1:100-1:300
ELISA	1:40000

Data



Western Blot analysis of Rat Brain using CNP Polyclonal Antibody at dilution of 1:500.
Observed Mw:47kDa
Calculated Mw:48kDa

Preparation & Storage

Storage Store at -20°C. Avoid freeze / thaw cycles.

Background

CNP (2',3'-cyclic nucleotide 3' phosphodiesterase) is a protein-coding gene. Diseases associated with CNP include hair disease, and schizophrenia. GO annotations related to this gene include RNA binding and 2',3'-cyclic-nucleotide 3'-phosphodiesterase activity.

For Research Use Only