

CNT2 Polyclonal Antibody

Catalog No. E-AB-30983

Note: Centrifuge before opening to ensure complete recovery of vial contents.

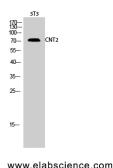
Description

Reactivity	Human,Mouse,Rat
Immunogen	Synthesized peptide derived from the Internal region of human CNT2
Host	Rabbit
Isotype	IgG
Purification	Affinity purification
Conjugation	Unconjugated
Buffer	PBS with 0.02% sodium azide, 0.5% protective protein and 50% glycerol, pH7.4

Applications Recommended Dilution

WB	1:500-1:2000
IHC	1:100-1:300
ELISA	1:10000

Data



Western Blot analysis of 3T3 cells with CNT2
Polyclonal Antibody.
Observed Mw:65kDa
Calculated Mw:72kDa

Preparation & Storage

Storage Store at -20°C. Avoid freeze / thaw cycles.

Background

SLC28A2 (Solute Carrier Family 28 Member 2) is a Protein Coding gene. Among its related pathways are Transport of glucose and other sugars, bile salts and organic acids, metal ions and amine compounds and Thiopurine Pathway, Pharmacokinetics/Pharmacodynamics. GO annotations related to this gene include nucleoside binding and purine nucleoside transmembrane transporter activity. An important paralog of this gene is SLC28A1.

For Research Use Only