

Cofilin Polyclonal Antibody

Catalog No. E-AB-30985

Note: Centrifuge before opening to ensure complete recovery of vial contents.

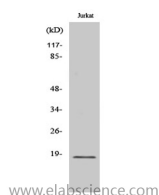
Description

Reactivity	Human,Mouse,Rat
Immunogen	Synthesized peptide derived from the Internal region of human Cofilin
Host	Rabbit
Isotype	IgG
Purification	Affinity purification
Buffer	PBS with 0.02% sodium azide,0.5% protective protein and 50% glycerol pH 7.4.

Applications Recommended Dilution

WB	1:500-1:2000
IF	1:200-1:1000
ELISA	1:40000

Data



Western Blot analysis of Jurkat cells using Cofilin Polyclonal Antibody at dilution of 1:1000.

Observed Mw:19kDa
Calculated Mw:19kDa

Preparation & Storage

Storage Store at -20°C. Avoid freeze / thaw cycles.

Background

Controls reversibly actin polymerization and depolymerization in a pH-sensitive manner. It has the ability to bind G- and F-actin in a 1:1 ratio of cofilin to actin. It is the major component of intranuclear and cytoplasmic actin rods.

For Research Use Only