

Connexin 25 Polyclonal Antibody

Catalog No. E-AB-30998

Note: Centrifuge before opening to ensure complete recovery of vial contents.

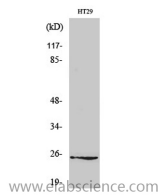
Description

Reactivity	Human
Immunogen	Synthesized peptide derived from the Internal region of human Connexin 25
Host	Rabbit
Isotype	IgG
Purification	Affinity purification
Buffer	PBS with 0.02% sodium azide, 0.5% protective protein and 50% glycerol pH 7.4.

Applications Recommended Dilution

WB	1:500-1:2000
ELISA	1:10000

Data



Western Blot analysis of HT29 cells using Connexin 25 Polyclonal Antibody at dilution of 1:500.

Observed Mw:24kDa
Calculated Mw:26kDa

Preparation & Storage

Storage Store at -20°C. Avoid freeze / thaw cycles.

Background

Connexins, such as GJB7, are involved in the formation of gap junctions, intercellular conduits that directly connect the cytoplasm of contacting cells. Each gap junction channel is formed by docking of 2 hemichannels, each of which contains 6 connexin subunits. GJB7 (Gap Junction Protein Beta 7) is a Protein Coding gene. Among its related pathways are Vesicle-mediated transport and Gap junction trafficking. An important paralog of this gene is GJB5.

For Research Use Only