

Connexin 43 Polyclonal Antibody

Catalog No. E-AB-30999

Note: Centrifuge before opening to ensure complete recovery of vial contents.

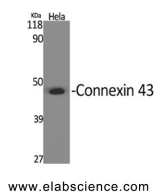
Description

Reactivity	Human, Mouse, Rat
Immunogen	Synthesized peptide derived from the C-terminal region of human Connexin 43
Host	Rabbit
Isotype	IgG
Purification	Affinity purification
Conjugation	Unconjugated
Buffer	PBS with 0.02% sodium azide, 0.5% protective protein and 50% glycerol, pH7.4

Applications Recommended Dilution

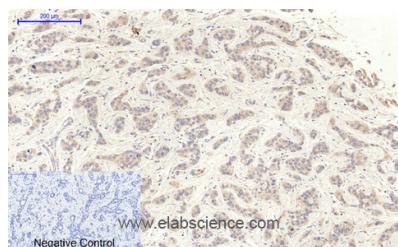
WB	1:500-1:2000
IHC	1:100-1:300
IF	1:200-1:1000
ELISA	1:10000

Data

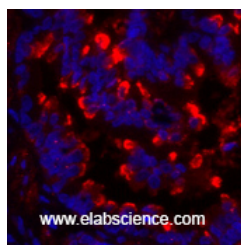


Western Blot analysis of HeLa cells using Connexin 43 Polyclonal Antibody at dilution of 1:2000.

Observed Mw:43kDa
Calculated Mw:43kDa



Immunohistochemistry of paraffin-embedded Human liver cancer tissue using Connexin 43 Polyclonal Antibody at dilution of 1:200.



Immunofluorescence analysis of Rat lung tissue using Connexin 43 Polyclonal Antibody at dilution of 1:200.

For Research Use Only

Preparation & Storage

Storage Store at -20°C. Avoid freeze / thaw cycles.

Background

One gap junction consists of a cluster of closely packed pairs of transmembrane channels, the connexons, through which materials of low MW diffuse from one cell to a neighboring cell. May play a critical role in the physiology of hearing by participating in the recycling of potassium to the cochlear endolymph.

For Research Use Only