

Connexin-26 Polyclonal Antibody

Catalog No. E-AB-31002

Note: Centrifuge before opening to ensure complete recovery of vial contents.

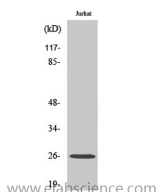
Description

| | |
|---------------------|--|
| Reactivity | Human,Mouse,Rat |
| Immunogen | Synthesized peptide derived from the Internal region of human Connexin-26. |
| Host | Rabbit |
| Isotype | IgG |
| Purification | Affinity purification |
| Buffer | PBS with 0.02% sodium azide,0.5% protective protein and 50% glycerol pH 7.4. |

Applications Recommended Dilution

| | |
|--------------|--------------|
| WB | 1:500-1:2000 |
| ELISA | 1:5000 |

Data



Western Blot analysis of Jurkat cells using
Connexin-26 Polyclonal Antibody at dilution of 1:500.

Observed Mw:26kDa
Calculated Mw:26kDa

Preparation & Storage

Storage Store at -20°C. Avoid freeze / thaw cycles.

Background

This gene encodes a member of the gap junction protein family. The gap junctions were first characterized by electron microscopy as regionally specialized structures on plasma membranes of contacting adherent cells. These structures were shown to consist of cell-to-cell channels that facilitate the transfer of ions and small molecules between cells. The gap junction proteins, also known as connexins, purified from fractions of enriched gap junctions from different tissues differ. According to sequence similarities at the nucleotide and amino acid levels, the gap junction proteins are divided into two categories, alpha and beta. Mutations in this gene are responsible for as much as 50% of pre-lingual, recessive deafness.

For Research Use Only