

# EIF2 alpha Polyclonal Antibody

Catalog Number:E-AB-31295



**Note:** Centrifuge before opening to ensure complete recovery of vial contents.

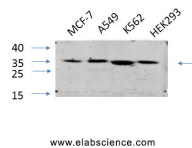
## Description

<b>Reactivity</b>	Human,Mouse,Rat,Monkey
<b>Immunogen</b>	Synthesized peptide derived from human eIF2 $\alpha$ around the non-phosphorylation site of Ser51.
<b>Host</b>	Rabbit
<b>Isotype</b>	IgG
<b>Purification</b>	Affinity purification
<b>Conjugation</b>	Unconjugated
<b>Formulation</b>	PBS with 0.02% sodium azide, 0.5% protective protein and 50% glycerol, pH7.4

## Applications Recommended Dilution

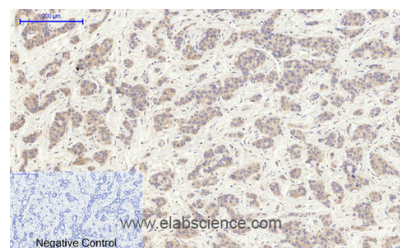
<b>WB</b>	1:500-1:2000
<b>IHC</b>	1:100-1:300
<b>IF</b>	1:50-1:200
<b>ELISA</b>	1:10000

## Data

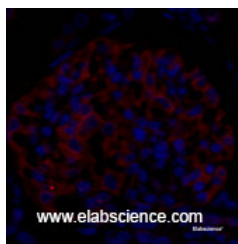


Western Blot analysis of various cells using EIF2 alpha Polyclonal Antibody at dilution of 1:1000.

**Observed Mw:38kDa**  
**Calculated Mw:36kDa**



Immunohistochemistry of paraffin-embedded Human liver cancer tissue using EIF2 alpha Polyclonal Antibody at dilution of 1:200.



Immunofluorescence analysis of Rat kidney tissue using EIF2 alpha Polyclonal Antibody at dilution of 1:200.

## Preparation & Storage

**Storage** Store at -20°C. Avoid freeze / thaw cycles.

## For Research Use Only

A Reliable Research Partner in Life Science and Medicine

Toll-free: 1-888-852-8623

Web: [www.elabscience.com](http://www.elabscience.com)

Tel: 1-832-243-6086

Email: [techsupport@elabscience.com](mailto:techsupport@elabscience.com)

Fax: 1-832-243-6017

# EIF2 alpha Polyclonal Antibody

Catalog Number:E-AB-31295



## Background

Functions in the early steps of protein synthesis of a small number of specific mRNAs. Acts by directing the binding of methionyl-tRNA<sub>i</sub> to 40S ribosomal subunits. In contrast to the eIF-2 complex, it binds methionyl-tRNA<sub>i</sub> to 40 S subunits in a codon-dependent manner, whereas the eIF-2 complex binds methionyl-tRNA<sub>i</sub> to 40 S subunits in a GTP-dependent manner. May act by impinging the expression of specific proteins.

## For Research Use Only

A Reliable Research Partner in Life Science and Medicine

Toll-free: 1-888-852-8623

Web: [www.elabscience.com](http://www.elabscience.com)

Tel: 1-832-243-6086

Email: [techsupport@elabscience.com](mailto:techsupport@elabscience.com)

Fax: 1-832-243-6017