

ER alpha Polyclonal Antibody

Catalog No. E-AB-31378

Note: Centrifuge before opening to ensure complete recovery of vial contents.

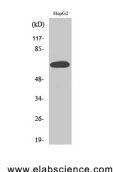
Description

Reactivity	Human
Immunogen	Synthesized peptide derived from human ER α around the non-phosphorylation site of Ser167.
Host	Rabbit
Isotype	IgG
Purification	Affinity purification
Conjugation	Unconjugated
Buffer	PBS with 0.02% sodium azide, 0.5% protective protein and 50% glycerol, pH7.4

Applications Recommended Dilution

WB	1:500-1:2000
IHC	1:100-1:300

Data



Western Blot analysis of HepG2 cells using ER alpha Polyclonal Antibody at dilution of 1:500.

Observed Mw:66kDa
Calculated Mw:66kDa

Preparation & Storage

Storage Store at -20°C. Avoid freeze / thaw cycles.

Background

Nuclear hormone receptor. The steroid hormones and their receptors are involved in the regulation of eukaryotic gene expression and affect cellular proliferation and differentiation in target tissues. Can activate the transcriptional activity of TFF1.

For Research Use Only