

## GAP43 Polyclonal Antibody

Catalog No. E-AB-31505

**Note:** Centrifuge before opening to ensure complete recovery of vial contents.

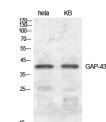
### Description

<b>Reactivity</b>	Human, Mouse, Rat
<b>Immunogen</b>	Synthesized peptide derived from human GAP-43 around the non-phosphorylation site of Ser41.
<b>Host</b>	Rabbit
<b>Isotype</b>	IgG
<b>Purification</b>	Affinity purification
<b>Conjugation</b>	Unconjugated
<b>Buffer</b>	PBS with 0.02% sodium azide, 0.5% protective protein and 50% glycerol, pH7.4

### Applications Recommended Dilution

<b>WB</b>	1:500-1:2000
<b>IHC</b>	1:100-1:300
<b>ELISA</b>	1:20000

### Data



www.elabscience.com

Western Blot analysis of HeLa, KB cells using GAP43 Polyclonal Antibody at dilution of 1:500.

**Observed Mw:43kDa**  
**Calculated Mw:25kDa**

### Preparation & Storage

**Storage** Store at -20°C. Avoid freeze / thaw cycles.

### Background

This protein is associated with nerve growth. It is a major component of the motile "growth cones" that form the tips of elongating axons.

### For Research Use Only