

B2M Polyclonal Antibody

Catalog No. E-AB-40351

Note: Centrifuge before opening to ensure complete recovery of vial contents.

Description

Reactivity	Human
Immunogen	Recombinant Human Beta-2-microglobulin protein
Host	Rabbit
Isotype	IgG
Purification	Antigen Affinity Purification
Conjugation	Unconjugated
Buffer	PBS with 0.05% Proclin300, 50% glycerol, pH7.3.

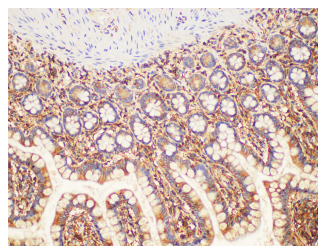
Applications Recommended Dilution

WB	1:1000-1:3000
IHC	1:100-1:300

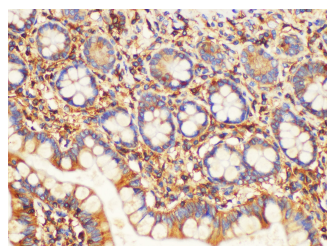
Data



Western Blot analysis of HeLa cells using B2M Polyclonal Antibody at dilution of 1:2000
Observed Mw:13 kDa
Calculated Mw:13 kDa



Immunohistochemistry of paraffin-embedded Human colon using B2M Polyclonal Antibody at dilution of 1:100(100×)



Immunohistochemistry of paraffin-embedded Human colon using B2M Polyclonal Antibody at dilution of 1:100(400×)

Preparation & Storage

Storage Store at -20°C. Avoid freeze / thaw cycles.

For Research Use Only

Background

Beta-2-microglobulin (B2M) is a component of MHC class I molecules, which are present on the surface of nearly all nucleated cells. It can be found in body fluids under physiologic conditions as a result of shedding from cell surfaces or intracellular release. B2M has various biological functions, including antigen presentation. Investigations reveal that increased synthesis and release of B2M are present in several malignant diseases.

For Research Use Only