

B2M Polyclonal Antibody

Catalog No. E-AB-40354

Note: Centrifuge before opening to ensure complete recovery of vial contents.

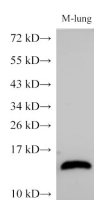
Description

Reactivity	Mouse,Rat
Immunogen	Recombinant Mouse Beta-2-microglobulin protein
Host	Rabbit
Isotype	IgG
Purification	Antigen Affinity Purification
Conjugation	Unconjugated
Buffer	PBS with 0.05% Proclin300, 50% glycerol, pH7.3.

Applications Recommended Dilution

WB 1:500-1:2000

Data



Western Blot analysis of Mouse lung using B2M Polyclonal Antibody at dilution of 1:1000

Observed Mw:13 kDa
Calculated Mw:13 kDa



Western Blot analysis of Rat liver using B2M Polyclonal Antibody at dilution of 1:1000

Preparation & Storage

Storage Store at -20°C. Avoid freeze / thaw cycles.

Background

Beta-2-microglobulin (B2M) is a component of MHC class I molecules, which are present on the surface of nearly all nucleated cells. It can be found in body fluids under physiologic conditions as a result of shedding from cell surfaces or intracellular release. B2M has various biological functions, including antigen presentation. Investigations reveal that increased synthesis and release of B2M are present in several malignant diseases.

For Research Use Only