

B2M Polyclonal Antibody

Catalog No. E-AB-40355

Note: Centrifuge before opening to ensure complete recovery of vial contents.

Description

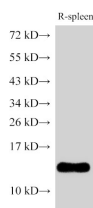
Reactivity	Mouse,Rat
Immunogen	Recombinant Rat Beta-2-microglobulin protein
Host	Rabbit
Isotype	IgG
Purification	Antigen Affinity Purification
Conjugation	Unconjugated
Buffer	PBS with 0.05% Proclin300, 50% glycerol, pH7.3.

Applications

Recommended Dilution

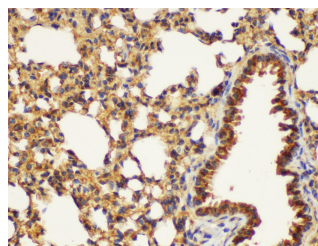
WB 1:500-1:1000 IHC
1:200-1:400

Data

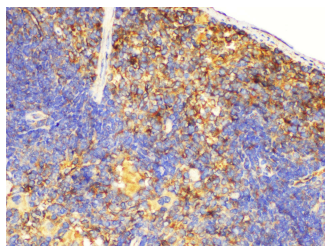


Western Blot analysis of Rat spleen using B2M Polyclonal Antibody at dilution of 1:500

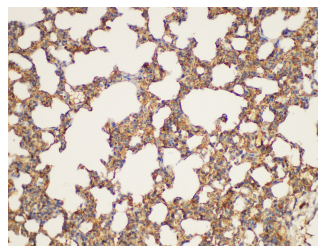
Observed Mw:13 kDa
Calculated Mw:13 kDa



Immunohistochemistry of paraffin-embedded Mouse lung using B2M Polyclonal Antibody at dilution of 1:200



Immunohistochemistry of paraffin-embedded Mouse spleen using B2M Polyclonal Antibody at dilution of 1:200



Immunohistochemistry of paraffin-embedded Rat lung using B2M Polyclonal Antibody at dilution of 1:200

Preparation & Storage

Storage Store at -20°C. Avoid freeze / thaw cycles.

For Research Use Only

Background

Beta-2-microglobulin (B2M) is a component of MHC class I molecules, which are present on the surface of nearly all nucleated cells. It can be found in body fluids under physiologic conditions as a result of shedding from cell surfaces or intracellular release. B2M has various biological functions, including antigen presentation. Investigations reveal that increased synthesis and release of B2M are present in several malignant diseases.

For Research Use Only