

## S100A8 Polyclonal Antibody

**Catalog No.** E-AB-40356

*Note:* Centrifuge before opening to ensure complete recovery of vial contents.

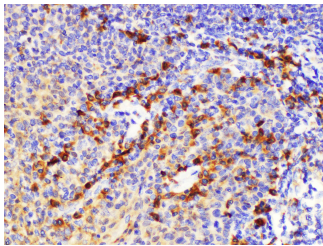
### Description

<b>Reactivity</b>	Human,Mouse,Rat
<b>Immunogen</b>	Recombinant Mouse Protein S100-A8 protein
<b>Host</b>	Rabbit
<b>Isotype</b>	IgG
<b>Purification</b>	Antigen Affinity Purification
<b>Conjugation</b>	Unconjugated
<b>Buffer</b>	PBS with 0.02% sodium azide,1% protective protein and 50% glycerol,pH7.4

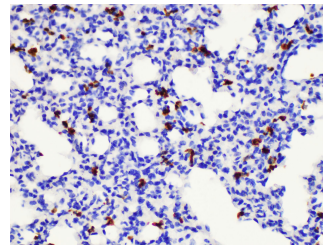
### Applications Recommended Dilution

**IHC** 1:100-1:300

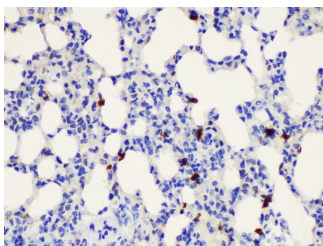
### Data



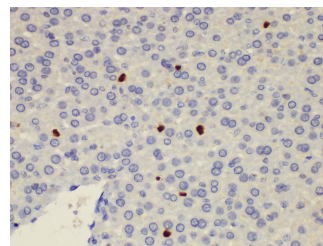
Immunohistochemistry of paraffin-embedded Human tonsil using S100a8 Polyclonal Antibody at dilution of 1:200



Immunohistochemistry of paraffin-embedded Mouse lung using S100a8 Polyclonal Antibody at dilution of 1:200

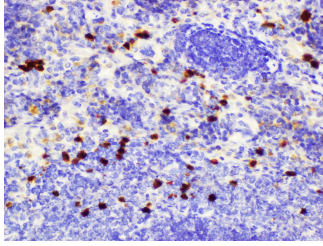


Immunohistochemistry of paraffin-embedded Rat lung using S100a8 Polyclonal Antibody at dilution of 1:200



Immunohistochemistry of paraffin-embedded Rat liver using S100a8 Polyclonal Antibody at dilution of 1:200

### For Research Use Only



Immunohistochemistry of paraffin-embedded Rat spleen using S100a8 Polyclonal Antibody at dilution of 1:200

## Preparation & Storage

**Storage** Store at -20°C. Avoid freeze / thaw cycles.

## Background

The protein encoded by this gene is a member of the S100 family of proteins containing 2 EF-hand calcium-binding motifs. S100 proteins are localized in the cytoplasm and/or nucleus of a wide range of cells, and involved in the regulation of a number of cellular processes such as cell cycle progression and differentiation. S100 genes include at least 13 members which are located as a cluster on chromosome 1q21. This protein may function in the inhibition of casein kinase and as a cytokine. Altered expression of this protein is associated with the disease cystic fibrosis. Multiple transcript variants encoding different isoforms have been found for this gene.

## For Research Use Only