

S100A8 Polyclonal Antibody

Catalog Number:E-AB-40356

Note: Centrifuge before opening to ensure complete recovery of vial contents.

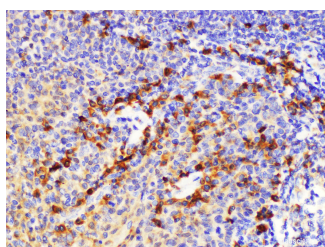
Description

Reactivity	Human,Mouse,Rat
Immunogen	Recombinant Mouse Protein S100-A8 protein
Host	Rabbit
Isotype	IgG
Purification	Antigen Affinity Purification
Conjugation	Unconjugated
Formulation	PBS with 0.05% Proclin300, 50% glycerol, pH7.3.

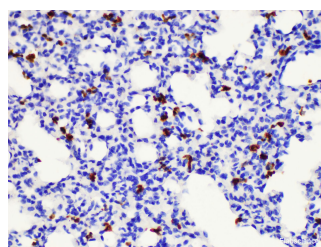
Applications Recommended Dilution

IHC	1:100-1:300
------------	-------------

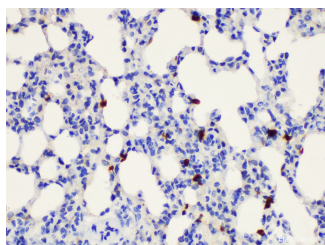
Data



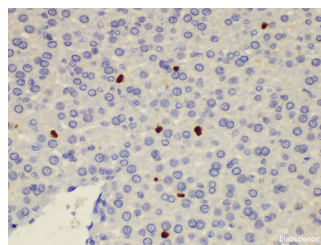
Immunohistochemistry of paraffin-embedded Human tonsil using S100a8 Polyclonal Antibody at dilution of 1:200



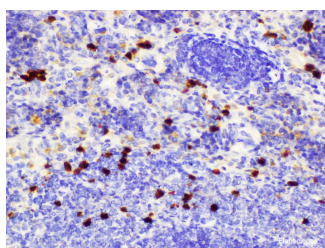
Immunohistochemistry of paraffin-embedded Mouse lung using S100a8 Polyclonal Antibody at dilution of 1:200



Immunohistochemistry of paraffin-embedded Rat lung using S100a8 Polyclonal Antibody at dilution of 1:200



Immunohistochemistry of paraffin-embedded Rat liver using S100a8 Polyclonal Antibody at dilution of 1:200



Immunohistochemistry of paraffin-embedded Rat spleen using S100a8 Polyclonal Antibody at dilution of 1:200

For Research Use Only

A Reliable Research Partner in Life Science and Medicine

Toll-free: 1-888-852-8623

Web: www.elabscience.com

Tel: 1-832-243-6086

Email: techsupport@elabscience.com

Fax: 1-832-243-6017

S100A8 Polyclonal Antibody

Catalog Number:E-AB-40356



Preparation & Storage

Storage Store at -20°C. Avoid freeze / thaw cycles.

Background

The protein encoded by this gene is a member of the S100 family of proteins containing 2 EF-hand calcium-binding motifs. S100 proteins are localized in the cytoplasm and/or nucleus of a wide range of cells, and involved in the regulation of a number of cellular processes such as cell cycle progression and differentiation. S100 genes include at least 13 members which are located as a cluster on chromosome 1q21. This protein may function in the inhibition of casein kinase and as a cytokine. Altered expression of this protein is associated with the disease cystic fibrosis. Multiple transcript variants encoding different isoforms have been found for this gene.

For Research Use Only

A Reliable Research Partner in Life Science and Medicine

Toll-free: 1-888-852-8623

Web: www.elabscience.com

Tel: 1-832-243-6086

Email: techsupport@elabscience.com

Fax: 1-832-243-6017