

HSPA5 Polyclonal Antibody

Catalog No. E-AB-31742

Note: Centrifuge before opening to ensure complete recovery of vial contents.

Description

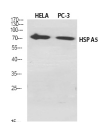
Reactivity	Human, Mouse, Rat, Monkey
Immunogen	Synthesized peptide derived from the C-terminal region of human HSP A5
Host	Rabbit
Isotype	IgG
Purification	Affinity purification
Conjugation	Unconjugated
Buffer	PBS with 0.02% sodium azide, 0.5% BSA and 50% glycerol, pH7.4

Applications

Recommended Dilution

WB 1:500-1:2000,
IHC 1:100-1:300, IF
1:200-1:1000, ELISA
1:20000

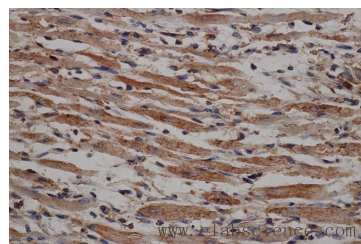
Data



www.elabscience.com

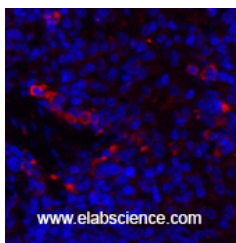
Western Blot analysis of HeLa, PC-3 cells using HSPA5 Polyclonal Antibody at dilution of 1:2000.

Observed Mw:75kDa
Calculated Mw:72kDa



www.elabscience.com

Immunohistochemistry of paraffin-embedded Mouse heart using HSPA5 Polyclonal Antibody at dilution of 1:50



www.elabscience.com

Immunofluorescence analysis of Rat spleen tissue using HSPA5 Polyclonal Antibody at dilution of 1:200.

Preparation & Storage

For Research Use Only

Storage Store at -20°C. Avoid freeze / thaw cycles.

Background

Probably plays a role in facilitating the assembly of multimeric protein complexes inside the endoplasmic reticulum. Involved in the correct folding of proteins and degradation of misfolded proteins via its interaction with DNAJC10, probably to facilitate the release of DNAJC10 from its substrate.