

ABCC2 Polyclonal Antibody

Catalog Number:E-AB-32082



Note: Centrifuge before opening to ensure complete recovery of vial contents.

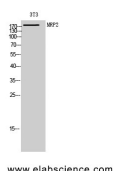
Description

| | |
|---------------------|--|
| Reactivity | Human |
| Immunogen | Synthesized peptide derived from the Internal region of human MRP2 |
| Host | Rabbit |
| Isotype | IgG |
| Purification | Affinity purification |
| Conjugation | Unconjugated |
| Formulation | PBS with 0.02% sodium azide, 0.5% protective protein and 50% glycerol, pH7.4 |

Applications Recommended Dilution

| | |
|--------------|--------------|
| WB | 1:500-1:2000 |
| ELISA | 1:10000 |

Data



Western Blot analysis of 3T3 cells using ABCC2 Polyclonal Antibody at dilution of 1:1000.

Observed Mw:175kDa
Calculated Mw:174kDa

Preparation & Storage

Storage Store at -20°C. Avoid freeze / thaw cycles.

Background

Mediates hepatobiliary excretion of numerous organic anions. May function as a cellular cisplatin transporter.

For Research Use Only

A Reliable Research Partner in Life Science and Medicine

Toll-free: 1-888-852-8623

Web: www.elabscience.com

Tel: 1-832-243-6086

Email: techsupport@elabscience.com

Fax: 1-832-243-6017