

NDUFB10 Polyclonal Antibody

Catalog Number:E-AB-32179



Note: Centrifuge before opening to ensure complete recovery of vial contents.

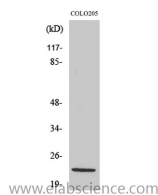
Description

Reactivity	Human
Immunogen	Synthesized peptide derived from the Internal region of human NDUFB10
Host	Rabbit
Isotype	IgG
Purification	Affinity purification
Formulation	PBS with 0.02% sodium azide,0.5% protective protein and 50% glycerol pH 7.4.

Applications Recommended Dilution

WB	1:500-1:2000
IHC	1:100-1:300
ELISA	1:40000

Data



Western Blot analysis of COLO205 cells with NDUFB10 Polyclonal Antibody.

Observed Mw:24kDa
Calculated Mw:21kDa

Preparation & Storage

Storage Store at -20°C. Avoid freeze / thaw cycles.

Background

NADH dehydrogenase [ubiquinone] 1 beta subcomplex subunit 10 is an enzyme that in humans is encoded by the NDUFB10 gene. NADH dehydrogenase (ubiquinone) 1 beta subcomplex subunit 10 is an accessory subunit of the NADH dehydrogenase (ubiquinone) complex, located in the mitochondrial inner membrane. It is also known as Complex I and is the largest of the five complexes of the electron transport chain.

For Research Use Only

A Reliable Research Partner in Life Science and Medicine

Toll-free: 1-888-852-8623

Web: www.elabscience.com

Tel: 1-832-243-6086

Email: techsupport@elabscience.com

Fax: 1-832-243-6017