

PDPK1 Polyclonal Antibody

Catalog Number:E-AB-32535



Note: Centrifuge before opening to ensure complete recovery of vial contents.

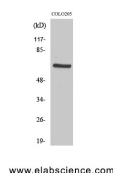
Description

Reactivity	Human,Mouse,Rat
Immunogen	Synthesized peptide derived from human PDK1 around the non-phosphorylation site of Ser241.
Host	Rabbit
Isotype	IgG
Purification	Affinity purification
Conjugation	Unconjugated
Formulation	PBS with 0.02% sodium azide, 0.5% protective protein and 50% glycerol, pH7.4

Applications Recommended Dilution

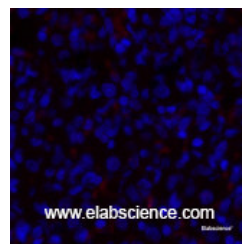
WB	1:500-1:2000
IHC	1:100-1:300
ELISA	1:10000

Data



Western Blot analysis of COLO205 cells using PDPK1 Polyclonal Antibody at dilution of 1:1000.

Observed Mw:60kDa
Calculated Mw:63kDa



Immunofluorescence analysis of Rat lung tissue using PDPK1 Polyclonal Antibody at dilution of 1:200.

Preparation & Storage

Storage Store at -20°C. Avoid freeze / thaw cycles.

Background

PDPK1 (3-phosphoinositide dependent protein kinase 1) is a protein-coding gene. GO annotations related to this gene include protein serine/threonine kinase activity and insulin receptor binding.

For Research Use Only

A Reliable Research Partner in Life Science and Medicine

Toll-free: 1-888-852-8623

Web: www.elabscience.com

Tel: 1-832-243-6086

Email: techsupport@elabscience.com

Fax: 1-832-243-6017