

**Note:** Centrifuge before opening to ensure complete recovery of vial contents.

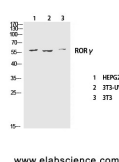
## Description

<b>Reactivity</b>	Human,Mouse
<b>Immunogen</b>	Synthesized peptide derived from the Internal region of human RORC
<b>Host</b>	Rabbit
<b>Isotype</b>	IgG
<b>Purification</b>	Affinity purification
<b>Conjugation</b>	Unconjugated
<b>Formulation</b>	PBS with 0.02% sodium azide, 0.5% protective protein and 50% glycerol, pH7.4

## Applications Recommended Dilution

<b>WB</b>	1:500-1:2000
<b>ELISA</b>	1:40000

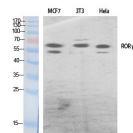
## Data



www.elabscience.com

Western Blot analysis of various cells using RORC Polyclonal Antibody at dilution of 1:1000.

**Observed Mw:58kDa**  
**Calculated Mw:58kDa**



www.elabscience.com

Western Blot analysis of various cells using RORC Polyclonal Antibody at dilution of 1:500.

## Preparation & Storage

**Storage** Store at -20°C. Avoid freeze / thaw cycles.

## Background

The protein encoded by this gene is a DNA-binding transcription factor and is a member of the NR1 subfamily of nuclear hormone receptors. The specific functions of this protein are not known; however, studies of a similar gene in mice have shown that this gene may be essential for lymphoid organogenesis and may play an important regulatory role in thymopoiesis. In addition, studies in mice suggest that the protein encoded by this gene may inhibit the expression of Fas ligand and IL2. Two transcript variants encoding different isoforms have been found for this gene. RORC (RAR Related Orphan Receptor C) is a Protein Coding gene. Diseases associated with RORC include Immunodeficiency 42 and Anus Cancer. Among its related pathways are Circadian rhythm related genes and Innate Immune System. GO annotations related to this gene include transcription factor activity, sequence-specific DNA binding and steroid hormone receptor activity. An important paralog of this gene is RORA.

## For Research Use Only

A Reliable Research Partner in Life Science and Medicine

Toll-free: 1-888-852-8623

Web: [www.elabscience.com](http://www.elabscience.com)

Tel: 1-832-243-6086

Email: [techsupport@elabscience.com](mailto:techsupport@elabscience.com)

Fax: 1-832-243-6017