

## ZSCAN26 Polyclonal Antibody

**Catalog No.** E-AB-32963

*Note:* Centrifuge before opening to ensure complete recovery of vial contents.

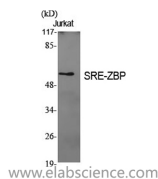
### Description

<b>Reactivity</b>	Human
<b>Immunogen</b>	Synthesized peptide derived from the Internal region of human SRE-ZBP
<b>Host</b>	Rabbit
<b>Isotype</b>	IgG
<b>Purification</b>	Affinity purification
<b>Buffer</b>	PBS with 0.02% sodium azide, 0.5% protective protein and 50% glycerol pH 7.4.

### Applications Recommended Dilution

<b>WB</b>	1:500-1:2000
<b>IF</b>	1:200-1:1000
<b>ELISA</b>	1:5000

### Data



Western Blot analysis of Jurkat cells with ZSCAN26  
Polyclonal Antibody  
**Observed Mw:55kDa**  
**Calculated Mw:55kDa**

### Preparation & Storage

**Storage** Store at -20°C. Avoid freeze / thaw cycles.

### Background

ZSCAN26 (Zinc Finger And SCAN Domain Containing 26) is a Protein Coding gene. GO annotations related to this gene include nucleic acid binding and transcription factor activity, sequence-specific DNA binding. An important paralog of this gene is ZNF35.

### For Research Use Only