

STAT3 Polyclonal Antibody

Catalog Number:E-AB-32981



Note: Centrifuge before opening to ensure complete recovery of vial contents.

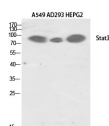
Description

Reactivity	Human,Mouse,Rat
Immunogen	Synthesized peptide derived from human Stat3 around the non-phosphorylation site of Tyr705.
Host	Rabbit
Isotype	IgG
Purification	Affinity purification
Conjugation	Unconjugated
Formulation	PBS with 0.02% sodium azide, 0.5% protective protein and 50% glycerol, pH7.4

Applications Recommended Dilution

WB	1:500-1:2000
IHC	1:100-1:300
IF	1:50-1:200
ELISA	1:5000

Data

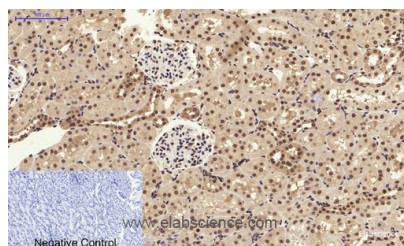


www.elabscience.com

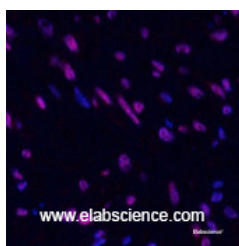
Western Blot analysis of 1) A549, 2) AD293T, 3)HepG2 cells using Stat3 Polyclonal Antibody at dilution of 1:2000.

Observed Mw:88kDa

Calculated Mw:88kDa



Immunohistochemistry of paraffin-embedded Rat kidney tissue using Stat3 Polyclonal Antibody at dilution of 1:200.



Immunofluorescence analysis of Human uterus tissue using Stat3 Polyclonal Antibody at dilution of 1:200.

Preparation & Storage

Storage Store at -20°C. Avoid freeze / thaw cycles.

For Research Use Only

A Reliable Research Partner in Life Science and Medicine

Toll-free: 1-888-852-8623

Web: www.elabscience.com

Tel: 1-832-243-6086

Email: techsupport@elabscience.com

Fax: 1-832-243-6017

STAT3 Polyclonal Antibody

Catalog Number:E-AB-32981



Background

Transcription factor that binds to the interleukin-6 (IL-6)-responsive elements identified in the promoters of various acute-phase protein genes. Activated by IL31 through IL31RA.

For Research Use Only

A Reliable Research Partner in Life Science and Medicine

Toll-free: 1-888-852-8623

Web: www.elabscience.com

Tel: 1-832-243-6086

Email: techsupport@elabscience.com

Fax: 1-832-243-6017