

ZFP36L1 Polyclonal Antibody

Catalog No. E-AB-33110

Note: Centrifuge before opening to ensure complete recovery of vial contents.

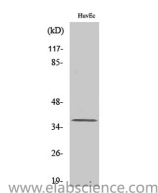
Description

Reactivity	Human,Mouse,Rat
Immunogen	Synthesized peptide derived from human TIS11B around the non-phosphorylation site of S92.
Host	Rabbit
Isotype	IgG
Purification	Affinity purification
Buffer	PBS with 0.02% sodium azide,0.5% protective protein and 50% glycerol pH 7.4.

Applications Recommended Dilution

WB	1:500-1:2000
IHC	1:100-1:300
ELISA	1:10000

Data



Western Blot analysis of HuvEc cells using ZFP36L1 Polyclonal Antibody at dilution of 1:1000.

Observed Mw:36kDa
Calculated Mw:36kDa

Preparation & Storage

Storage Store at -20°C. Avoid freeze / thaw cycles.

Background

This gene is a member of the TIS11 family of early response genes, which are induced by various agonists such as the phorbol ester TPA and the polypeptide mitogen EGF. This gene is well conserved across species and has a promoter that contains motifs seen in other early-response genes. The encoded protein contains a distinguishing putative zinc finger domain with a repeating cys-his motif. This putative nuclear transcription factor most likely functions in regulating the response to growth factors. Alternatively spliced transcript variants encoding different isoforms have been found for this gene. ZFP36L1 (ZFP36 Ring Finger Protein Like 1) is a Protein Coding gene. Diseases associated with ZFP36L1 include Sotos Syndrome 1. Among its related pathways are Validated targets of C-MYC transcriptional repression and PI3K / Akt Signaling. GO annotations related to this gene include poly(A) RNA binding and mRNA binding. An important paralog of this gene is ZFP36L2.

For Research Use Only

For Research Use Only

Toll-free: 1-888-852-8623

Web: www.elabscience.com

Tel: 1-832-243-6086

Email: techsupport@elabscience.com

Fax: 1-832-243-6017