

ZNF148 Polyclonal Antibody

Catalog No. E-AB-33250

Note: Centrifuge before opening to ensure complete recovery of vial contents.

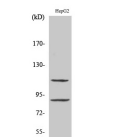
Description

Reactivity	Human,Mouse,Rat
Immunogen	Synthesized peptide derived from the N-terminal region of human ZBP-89
Host	Rabbit
Isotype	IgG
Purification	Affinity purification
Conjugation	Unconjugated
Buffer	PBS with 0.02% sodium azide, 0.5% protective protein and 50% glycerol, pH7.4

Applications Recommended Dilution

WB	1:500-1:2000
IHC	1:100-1:300
IF	1:200-1:1000
ELISA	1:5000

Data



www.elabscience.com

Western Blot analysis of HepG2 cells with ZNF148
Polyclonal Antibody
Observed Mw:89kDa
Calculated Mw:89kDa

Preparation & Storage

Storage Store at -20°C. Avoid freeze / thaw cycles.

Background

The protein encoded by this gene is a member of the Kruppel family of zinc finger DNA binding proteins. The encoded protein activates transcription of the T-cell receptor and intestinal alkaline phosphatase genes but represses transcription of the ornithine decarboxylase, vimentin, gastrin, stomelysin, and enolase genes. Increased expression of this gene results in decreased patient survival rates from colorectal cancer, while mutations in this gene have been associated with global developmental delay, hypoplastic corpus callosum, and dysmorphic facies.

For Research Use Only