

ZNF337 Polyclonal Antibody

Catalog No. E-AB-33264

Note: Centrifuge before opening to ensure complete recovery of vial contents.

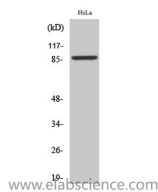
Description

| | |
|---------------------|---|
| Reactivity | Human |
| Immunogen | Synthesized peptide derived from the Internal region of human ZNF337 |
| Host | Rabbit |
| Isotype | IgG |
| Purification | Affinity purification |
| Buffer | PBS with 0.02% sodium azide, 0.5% protective protein and 50% glycerol pH 7.4. |

Applications Recommended Dilution

| | |
|--------------|--------------|
| WB | 1:500-1:2000 |
| IHC | 1:100-1:300 |
| IF | 1:200-1:1000 |
| ELISA | 1:20000 |

Data



Western Blot analysis of HeLa cells using ZNF337
Polyclonal Antibody at dilution of 1:1000.
Observed Mw:86kDa
Calculated Mw:87kDa

Preparation & Storage

Storage Store at -20°C. Avoid freeze / thaw cycles.

Background

May be involved in transcriptional regulation.

For Research Use Only