

Lamin B1 Polyclonal Antibody

Catalog No. E-AB-33450

Note: Centrifuge before opening to ensure complete recovery of vial contents.

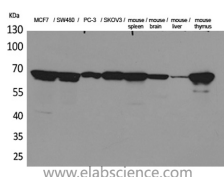
Description

Reactivity	Human, Mouse, Rat
Immunogen	Synthesized peptide derived from the Internal region of human Lamin B1.
Host	Rabbit
Isotype	IgG
Purification	Affinity purification
Buffer	PBS with 0.02% sodium azide, 0.5% protective protein and 50% glycerol, pH7.4

Applications Recommended Dilution

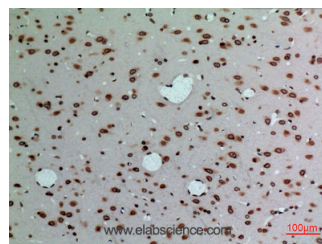
WB	1:500-1:2000
IHC	1:100-300
ELISA	1:20000

Data

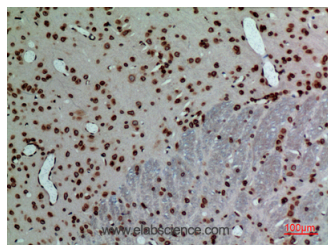


Western Blot analysis of MCF-7, SW480, PC-3, SKOV3, Mouse spleen, Mouse brain, Mouse liver, Mouse thymus using Lamin B1 Polyclonal Antibody at dilution of 1:500.

Observed Mw:70kDa
Calculated Mw:66kDa



Immunohistochemistry of paraffin-embedded Rat brain tissue using Lamin B1 Polyclonal Antibody at dilution of 1:100.



Immunohistochemistry of paraffin-embedded Rat brain tissue using Lamin B1 Polyclonal Antibody at dilution of 1:100.

Preparation & Storage

For Research Use Only

Storage Store at -20°C. Avoid freeze / thaw cycles.

Background

Lamins are components of the nuclear lamina, a fibrous layer on the nucleoplasmic side of the inner nuclear membrane, which is thought to provide a framework for the nuclear envelope and may also interact with chromatin.