

HSD11 beta Polyclonal Antibody

Catalog No. E-AB-33637

Note: Centrifuge before opening to ensure complete recovery of vial contents.

Description

Reactivity	Human, Mouse, Rat
Immunogen	Synthesized peptide derived from the N-terminal region of human 11 β -HSD1.
Host	Rabbit
Isotype	IgG
Purification	Affinity purification
Conjugation	Unconjugated
Buffer	PBS with 0.02% sodium azide, 0.5% protective protein and 50% glycerol, pH7.4

Applications Recommended Dilution

WB	1:500-1:2000
IHC	1:100-1:300
ELISA	1:5000-1:10000

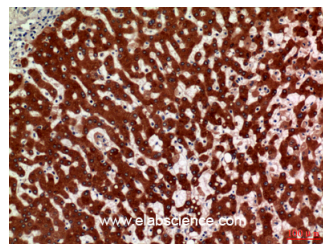
Data



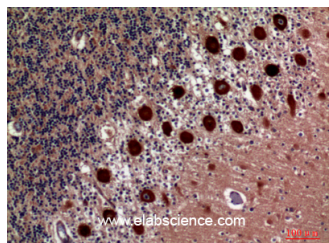
www.elabscience.com

Western Blot analysis of K562 cells using HSD11 beta Polyclonal Antibody at dilution of 1:500.

Observed Mw:35kDa
Calculated Mw:32kDa



Immunohistochemistry of paraffin-embedded Human liver tissue using HSD11 beta Polyclonal Antibody at dilution of 1:100.



Immunohistochemistry of paraffin-embedded Human brain tissue using HSD11 beta Polyclonal Antibody at dilution of 1:100.

Preparation & Storage

For Research Use Only

Storage Store at -20°C. Avoid freeze / thaw cycles.

Background

Catalyzes reversibly the conversion of cortisol to the inactive metabolite cortisone. Catalyzes reversibly the conversion of 7-ketocholesterol to 7-beta-hydroxycholesterol. In intact cells, the reaction runs only in one direction, from 7-ketocholesterol to 7-beta-hydroxycholesterol.

For Research Use Only