

AGR2 Polyclonal Antibody

Catalog Number:E-AB-10036



Note: Centrifuge before opening to ensure complete recovery of vial contents.

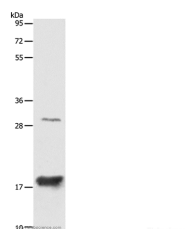
Description

| | |
|---------------------|-----------------------------------------------------|
| Reactivity | Human,Mouse |
| Immunogen | Recombinant protein of human AGR2 |
| Host | Rabbit |
| Isotype | IgG |
| Purification | Affinity purification |
| Conjugation | Unconjugated |
| Formulation | PBS with 0.05% sodium azide and 50% glycerol, PH7.4 |

Applications Recommended Dilution

| | |
|-----------|---------------|
| WB | 1:1000-1:5000 |
|-----------|---------------|

Data



Western Blot analysis of Mouse Large intestine tissue using AGR2 Polyclonal Antibody at dilution of 1:1000
Calculated Mw:20kDa

Preparation & Storage

Storage Store at -20°C. Avoid freeze / thaw cycles.

Background

Anterior gradient protein 2 homolog (AGR2) is a human protein originally discovered in *Xenopus laevis*, encoded for by the gene of the same name. In *Xenopus* AGR2 is an important role in cement gland differentiation, however in human cancer cell lines high levels of AGR2 correlate with reduction of the p53 response and AGR2 levels are elevated in the preneoplastic tissue Barrett's oesophagus.

For Research Use Only

A Reliable Research Partner in Life Science and Medicine

Toll-free: 1-888-852-8623

Web: www.elabscience.com

Tel: 1-832-243-6086

Email: techsupport@elabscience.com

Fax: 1-832-243-6017