

# ANXA2 Polyclonal Antibody

Catalog Number:E-AB-10043



**Note:** Centrifuge before opening to ensure complete recovery of vial contents.

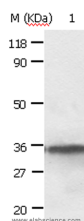
## Description

|                     |   |
|---------------------|---|
| <b>Reactivity</b>   | Human,Mouse,Rat                                     |
| <b>Immunogen</b>    | Recombinant protein of human ANXA2                  |
| <b>Host</b>         | Rabbit  |
| <b>Isotype</b>      | IgG   |
| <b>Purification</b> | Affinity purification                               |
| <b>Conjugation</b>  | Unconjugated  |
| <b>Formulation</b>  | PBS with 0.05% sodium azide and 50% glycerol, PH7.4 |

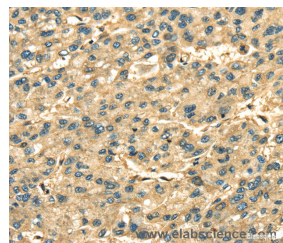
## Applications Recommended Dilution

|            |               |
|------------|---------------|
| <b>WB</b>  | 1:1000-1:5000 |
| <b>IHC</b> | 1:25-1:100    |

## Data



Western Blot analysis of HepG2 cell using ANXA2 Polyclonal Antibody at dilution of 1:640  
**Calculated Mw:38kDa**



Immunohistochemistry of paraffin-embedded Human liver cancer using ANXA2 Polyclonal Antibody at dilution of 1:35

## Preparation & Storage

**Storage** Store at -20°C. Avoid freeze / thaw cycles.

## Background

This gene encodes a member of the annexin family. Members of this calcium-dependent phospholipid-binding protein family play a role in the regulation of cellular growth and in signal transduction pathways. This protein functions as an autocrine factor which heightens osteoclast formation and bone resorption. This gene has three pseudogenes located on chromosomes 4, 9 and 10, respectively. Multiple alternatively spliced transcript variants encoding different isoforms have been found for this gene.

## For Research Use Only

A Reliable Research Partner in Life Science and Medicine

Toll-free: 1-888-852-8623

Web: [www.elabscience.com](http://www.elabscience.com)

Tel: 1-832-243-6086

Email: [techsupport@elabscience.com](mailto:techsupport@elabscience.com)

Fax: 1-832-243-6017