

BNIP1 Polyclonal Antibody

Catalog No. E-AB-10097

Note: Centrifuge before opening to ensure complete recovery of vial contents.

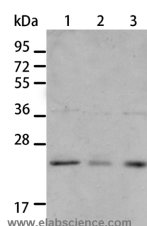
Description

| | |
|---------------------|---|
| Reactivity | Human,Mouse,Rat |
| Immunogen | Recombinant protein of human BNIP1 |
| Host | Rabbit |
| Isotype | IgG |
| Purification | Affinity purification |
| Conjugation | Unconjugated |
| Buffer | PBS with 0.05% sodium azide and 50% glycerol, PH7.4 |

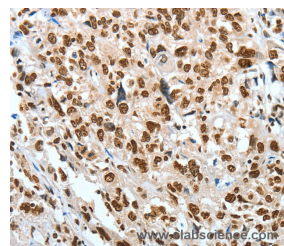
Applications Recommended Dilution

| | |
|------------|--------------|
| WB | 1:200-1:1000 |
| IHC | 1:50-1:200 |

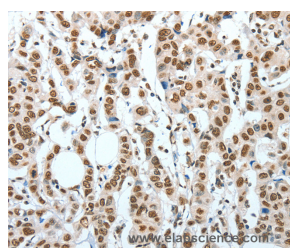
Data



Western Blot analysis of A431 and A172 cell,
Human liver cancer tissue using BNIP1 Polyclonal
Antibody at dilution of 1:550
Calculated Mw:26kDa



Immunohistochemistry of paraffin-embedded
Human esophagus cancer using BNIP1 Polyclonal
Antibody at dilution of 1:60



Immunohistochemistry of paraffin-embedded
Human breast cancer using BNIP1 Polyclonal
Antibody at dilution of 1:60

Preparation & Storage

Storage Store at -20°C. Avoid freeze / thaw cycles.

For Research Use Only

Background

This gene is a member of the BCL2/adenovirus E1B 19 kd-interacting protein (BNIP) family. It interacts with the E1B 19 kDa protein, which protects cells from virally-induced cell death. The encoded protein also interacts with E1B 19 kDa-like sequences of BCL2, another apoptotic protector. In addition, this protein is involved in vesicle transport into the endoplasmic reticulum. Alternative splicing of this gene results in four protein products with identical N- and C-termini.

For Research Use Only