

# IL10RA Polyclonal Antibody

Catalog Number:E-AB-10098

**Note:** Centrifuge before opening to ensure complete recovery of vial contents.

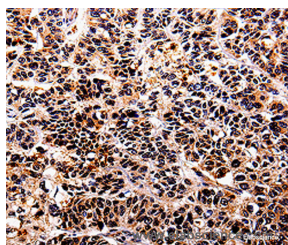
## Description

<b>Reactivity</b>	Human
<b>Immunogen</b>	Recombinant protein of human IL10RA
<b>Host</b>	Rabbit
<b>Isotype</b>	IgG
<b>Purification</b>	Affinity purification
<b>Conjugation</b>	Unconjugated
<b>Formulation</b>	PBS with 0.05% sodium azide and 50% glycerol, PH7.4

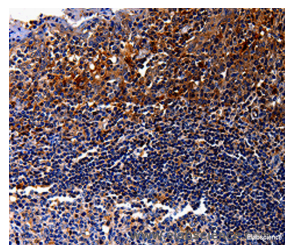
## Applications Recommended Dilution

<b>IHC</b>	1:25-1:100
------------	------------

## Data



Immunohistochemistry of paraffin-embedded Human lung cancer tissue using IL10RA Polyclonal Antibody at dilution 1:30



Immunohistochemistry of paraffin-embedded Human tonsil tissue using IL10RA Polyclonal Antibody at dilution 1:30

## Preparation & Storage

<b>Storage</b>	Store at -20°C. Avoid freeze / thaw cycles.
----------------	---

## Background

The protein encoded by this gene is a receptor for interleukin 10. This protein is structurally related to interferon receptors. It has been shown to mediate the immunosuppressive signal of interleukin 10, and thus inhibits the synthesis of proinflammatory cytokines. This receptor is reported to promote survival of progenitor myeloid cells through the insulin receptor substrate-2/PI 3-kinase/AKT pathway. Activation of this receptor leads to tyrosine phosphorylation of JAK1 and TYK2 kinases. Two transcript variants, one protein-coding and the other not protein-coding, have been found for this gene.

## For Research Use Only

A Reliable Research Partner in Life Science and Medicine

Toll-free: 1-888-852-8623

Web: [www.elabscience.com](http://www.elabscience.com)

Tel: 1-832-243-6086

Email: [techsupport@elabscience.com](mailto:techsupport@elabscience.com)

Fax: 1-832-243-6017