

CAMK1 Polyclonal Antibody

Catalog No. E-AB-10198

Note: Centrifuge before opening to ensure complete recovery of vial contents.

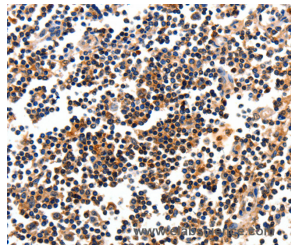
Description

Reactivity	Human,Mouse,Rat
Immunogen	Recombinant protein of human CAMK1
Host	Rabbit
Isotype	IgG
Purification	Affinity purification
Conjugation	Unconjugated
Buffer	PBS with 0.05% sodium azide, 50% glycerol, PH7.3

Applications Recommended Dilution

IHC	1:10-1:50
------------	-----------

Data



Immunohistochemistry of paraffin-embedded Human tonsil using CAMK1 Polyclonal Antibody at dilution of 1:10

Preparation & Storage

Storage Store at -20°C. Avoid freeze / thaw cycles.

Background

Calcium/calmodulin-dependent protein kinase I is expressed in many tissues and is a component of a calmodulin-dependent protein kinase cascade. Calcium/calmodulin directly activates calcium/calmodulin-dependent protein kinase I by binding to the enzyme and indirectly promotes the phosphorylation and synergistic activation of the enzyme by calcium/calmodulin-dependent protein kinase I kinase.

For Research Use Only