

CAP2 Polyclonal Antibody

Catalog No. E-AB-10200

Note: Centrifuge before opening to ensure complete recovery of vial contents.

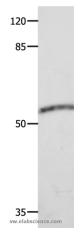
Description

Reactivity	Human,Mouse,Rat
Immunogen	Recombinant protein of human CAP2
Host	Rabbit
Isotype	IgG
Purification	Affinity purification
Conjugation	Unconjugated
Buffer	PBS with 0.05% sodium azide and 50% glycerol, PH7.4

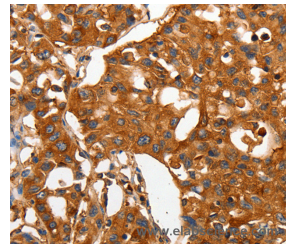
Applications Recommended Dilution

WB	1:200-1:1000
IHC	1:50-1:200

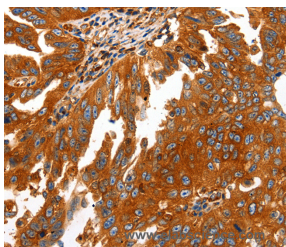
Data



Western Blot analysis of Human fetal muscle tissue using CAP2 Polyclonal Antibody at dilution of 1:600
Calculated Mw:53kDa



Immunohistochemistry of paraffin-embedded Human lung cancer using CAP2 Polyclonal Antibody at dilution of 1:50



Immunohistochemistry of paraffin-embedded Human ovarian cancer using CAP2 Polyclonal Antibody at dilution of 1:50

Preparation & Storage

Storage Store at -20°C. Avoid freeze / thaw cycles.

Background

For Research Use Only

This gene was identified by its similarity to the gene for human adenylyl cyclase-associated protein. The function of the protein encoded by this gene is unknown. However, the protein appears to be able to interact with adenylyl cyclase-associated protein and actin.